

**S100A2 Antibody**  
**Purified Mouse Monoclonal Antibody (Mab)**  
**Catalog # AM8507b****Specification**

---

**S100A2 Antibody - Product Information**

Application	WB, IHC-P, IF,E
Primary Accession	<a href="#">P29034</a>
Reactivity	Human
Host	Mouse
Clonality	monoclonal
Isotype	IgG1,k
Calculated MW	11117

**S100A2 Antibody - Additional Information****Gene ID** 6273**Other Names**

Protein S100-A2, CAN19, Protein S-100L, S100 calcium-binding protein A2, S100A2, S100L

**Target/Specificity**

This S100A2 antibody is generated from a mouse immunized with a recombinant protein of human S100A2.

**Dilution**

WB~~1:4000

IHC-P~~1:25

IF~~1:25

E~~Use at an assay dependent concentration.

**Format**

Purified monoclonal antibody supplied in PBS with 0.09% (W/V) sodium azide. This antibody is purified through a protein G column, followed by dialysis against PBS.

**Storage**

Maintain refrigerated at 2-8°C for up to 2 weeks. For long term storage store at -20°C in small aliquots to prevent freeze-thaw cycles.

**Precautions**

S100A2 Antibody is for research use only and not for use in diagnostic or therapeutic procedures.

**S100A2 Antibody - Protein Information****Name** S100A2**Synonyms** S100L

**Function** May function as calcium sensor and modulator, contributing to cellular calcium signaling. May function by interacting with other proteins, such as TPR-containing proteins, and indirectly play a role in many physiological processes. May also play a role in suppressing tumor cell growth.

**Tissue Location**

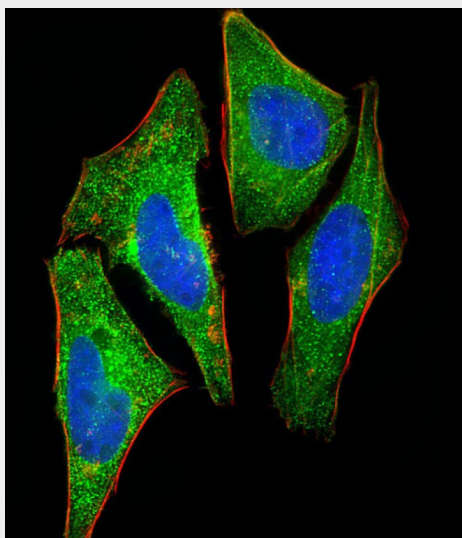
A subset of epithelial cells including normal human mammary epithelial cells and keratinocytes

**S100A2 Antibody - Protocols**

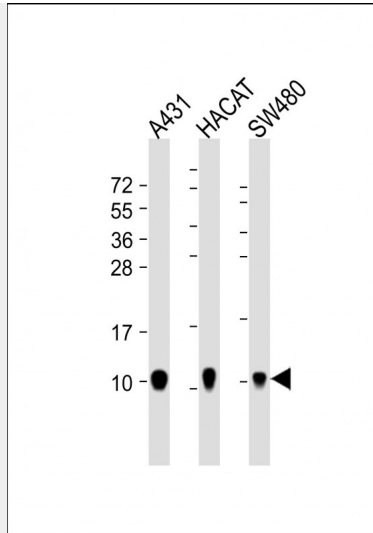
Provided below are standard protocols that you may find useful for product applications.

- [Western Blot](#)
- [Blocking Peptides](#)
- [Dot Blot](#)
- [Immunohistochemistry](#)
- [Immunofluorescence](#)
- [Immunoprecipitation](#)
- [Flow Cytometry](#)
- [Cell Culture](#)

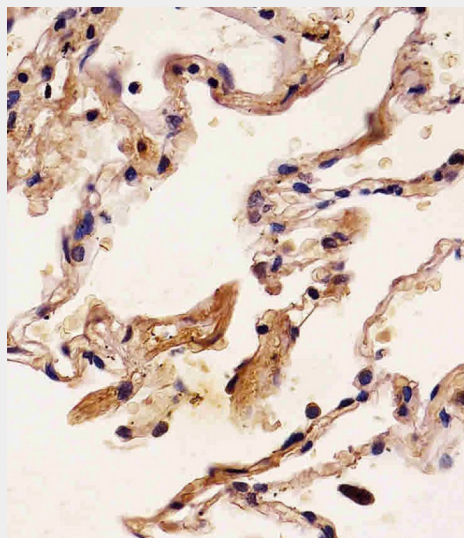
**S100A2 Antibody - Images**



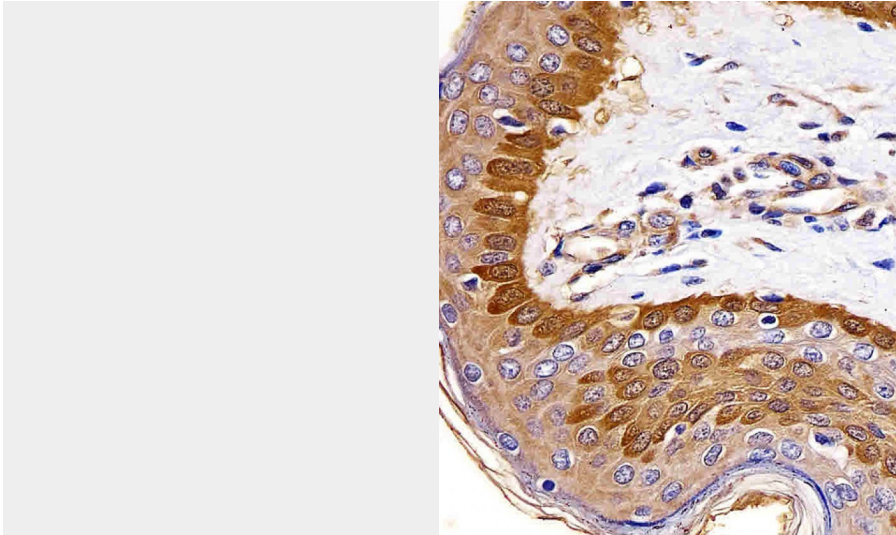
Immunofluorescent analysis of 4% paraformaldehyde-fixed, 0.1% Triton X-100 permeabilized HeLa (human cervical epithelial adenocarcinoma cell line) cells labeling S100A2 with AM8507b at 1/25 dilution, followed by Dylight® 488-conjugated goat anti-mouse IgG (NA166821) secondary antibody at 1/200 dilution (green). Immunofluorescence image showing cytoplasm and nucleus staining on HeLa cell line. Cytoplasmic actin is detected with Dylight® 554 Phalloidin (PD18466410) at 1/100 dilution (red). The nuclear counter stain is DAPI (blue).



All lanes : Anti-S100A2 Antibody at 1:4000 dilution Lane 1: A431 whole cell lysate Lane 2: HACAT whole cell lysate Lane 3: SW480 whole cell lysate Lysates/proteins at 20  $\mu$ g per lane. Secondary Goat Anti-mouse IgG, (H+L), Peroxidase conjugated at 1/10000 dilution. Predicted band size : 11 kDa Blocking/Dilution buffer: 5% NFDM/TBST.



AM8507b staining S100A2 in human lung tissue sections by Immunohistochemistry (IHC-P - paraformaldehyde-fixed, paraffin-embedded sections). Tissue was fixed with formaldehyde and blocked with 3% BSA for 0.5 hour at room temperature; antigen retrieval was by heat mediation with a citrate buffer (pH6). Samples were incubated with primary antibody (1/25) for 1 hour at 37°C. A undiluted biotinylated goat polyvalent antibody was used as the secondary antibody.



AM8507b staining S100A2 in human skin tissue sections by Immunohistochemistry (IHC-P - paraformaldehyde-fixed, paraffin-embedded sections). Tissue was fixed with formaldehyde and blocked with 3% BSA for 0.5 hour at room temperature; antigen retrieval was by heat mediation with a citrate buffer (pH6). Samples were incubated with primary antibody (1/25) for 1 hour at 37°C. A undiluted biotinylated goat polyvalent antibody was used as the secondary antibody.

#### **S100A2 Antibody - Background**

May function as calcium sensor and modulator, contributing to cellular calcium signaling. May function by interacting with other proteins, such as TPR-containing proteins, and indirectly play a role in many physiological processes. May also play a role in suppressing tumor cell growth.

#### **S100A2 Antibody - References**

Lee S.W., et al. Proc. Natl. Acad. Sci. U.S.A. 89:2504-2508(1992).  
Wicki R., et al. Cell Calcium 22:243-254(1997).  
Gregory S.G., et al. Nature 441:315-321(2006).  
Rasmussen H.H., et al. Electrophoresis 13:960-969(1992).  
Shimamoto S., et al. FEBS Lett. 584:1119-1125(2010).